

DECS

Intelligent Content Management System

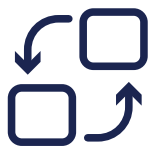
DESIGNED BY DIGIBIRD



Overview



Digitalize



Interactivity



Diversify



Convenience

DECS is a newly released intelligent content manager, which can work seamlessly with DigiBird UniManager to deliver a brand-new visual experience and convenience for exhibition halls and experience centers.

Multimedia supported



Full Control Access



PPT slide control
Video play progress control
Live annotation



Through a control interface, users can easily move to the next or previous page of selected files. You can do annotations on file and sync to a video wall.

Animation is supported as well for PPT files. As for webpages, you can move up/down the page and collaborate with a multiple-level menu through a control interface.

Customized Interface



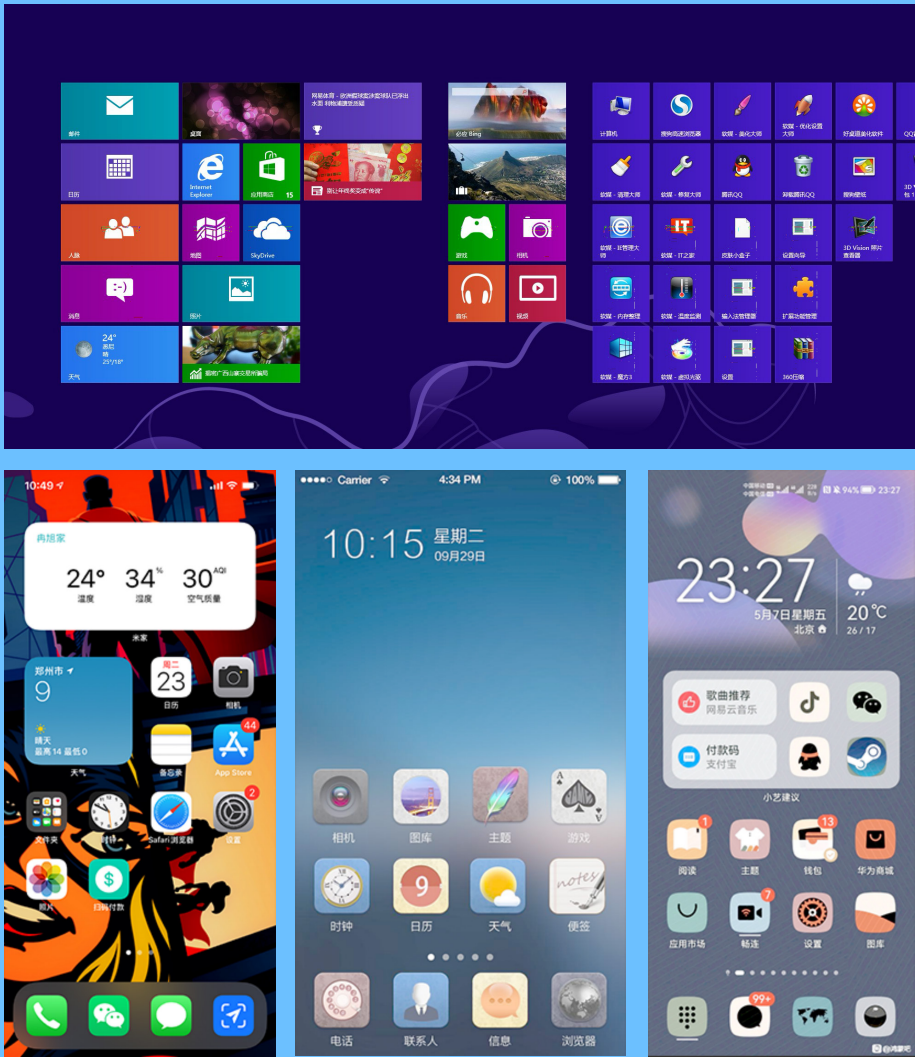
DECS offering more than 10x templates and 100+ modules to meet your personalized demands.



Scheduling and Planning



Desired contents will be presented to the audience following a pre-designed schedule. A plan combined with multiple presets, such as video wall display, audio devices, and environmental devices, can be triggered and executed in a collaborative way.



Simple presentation

To ease the workload of operators, DECS offers multiple options to present content to audiences. The operator can cast laptop and smartphone content wirelessly, store the content to a USB flash disk and connect to DECS server.

All-in-one Control



By working with UniManager, DECS will be the only platform needed in an exhibition hall. Video display, lighting, audio, and the environment, all devices will be controlled through one interface.



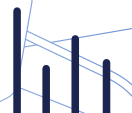
Light control



operation monitor



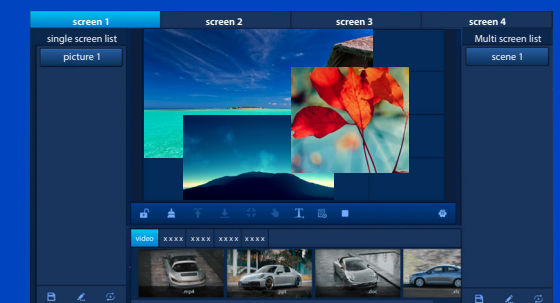
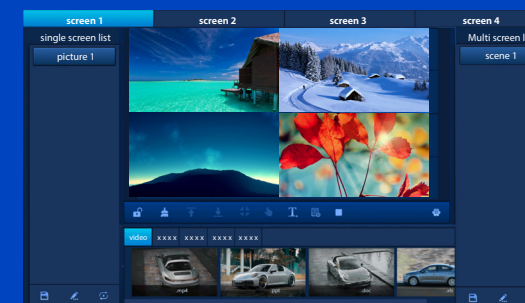
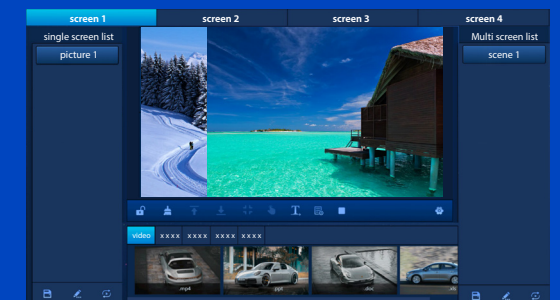
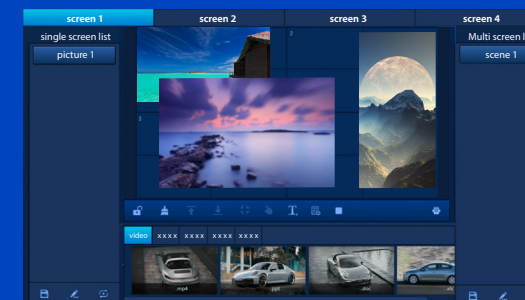
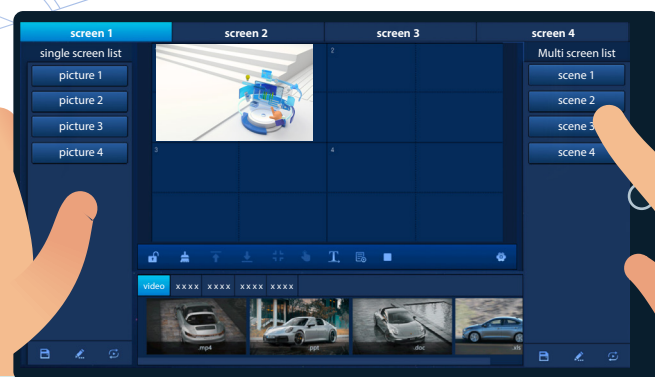
screen control



Audio control



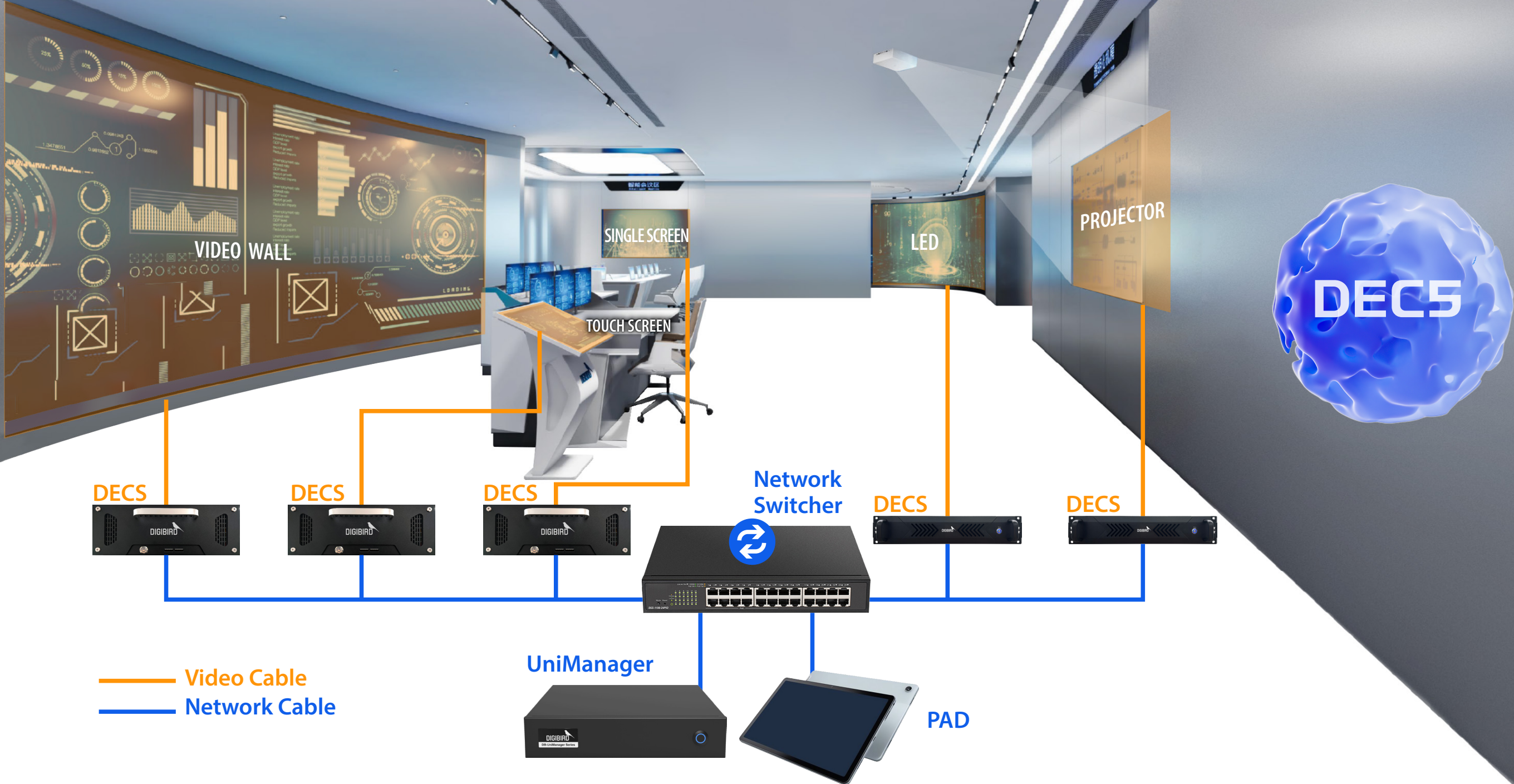
environmental monitoring



Brand-new visual

To meet the demand of the video wall scale, DECS has 1x output, 2x output and 4x output servers as options. Up to 16x content can be displayed simultaneously on a single video wall. Each content window support zooming, resizing, and roaming.

Diagram



Application



Specifications

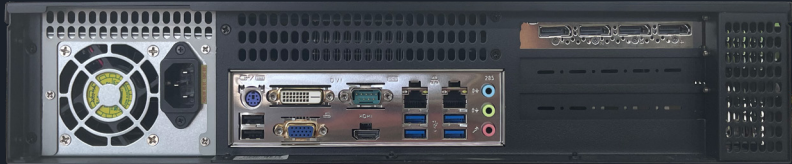
DB-DECS-CT1



Processor	CPU	Intel LGA1150 haswell i5-4460	System monitoring	System monitoring	Monitoring of CPU temperature, fan speed, system voltage, etc.
	Chipset	Intel H8103			
Memory	Interface	DDR3 SO-DIMM	Power requirements	Power supply type	AC power supply (AC-IN)
	Memory	8GB DDR3		Input voltage	100 ~ 240V
Graphic display	Graphics card	GT1050 4G	Machine appearance	Size	Depth x width x height: 215mm x 303mm x 89 mm
	Backend output	HDMI/DVI		Color	Black
	HDMI	MAX 4096*2160@60Hz		Shell material	Metal
Network	Network card chip	Realtek RTL8111	External environment	Operating temperature	0℃ ~ 40℃
	Network Interface	2x RJ45		Storage temperature	-20℃ ~ 70℃
I/O	USB	2*USB 2.0/2*USB 3.0		Relative humidity	5%~95%(non-condensed state)
	Audio	1 x Line out, 1 x Mic in			
	COM	1 COM port, optional 3 RS232 and 2 RS232/RS485			
Extension ports	Mini PCIE	1* Mini PCIE can support Wi-Fi/BT module			
	SIM	1* SIM Card Slot			
Storage	SSD	mSATA 128GB			
	HDD	2.5"1TB			
Operating system	Windows	Windows 10 64bit			
Button	Switch button	1* POWER button			
	Power button	1* Main power button (rear window)			

Specifications

DB-DECS-CT4



Processor	CPU	Intel LGA1151 Socket I7-7700	System monitoring	System monitoring	Monitoring of CPU temperature, fan speed, system voltage, etc.
	Chipset	Intel 110			
Memory	Interface	2 x DDR4 U-DIMM	Power requirements	Power supply type	AC power supply (AC-IN)
	Memory	16GB (up to 32GB)		Input voltage	100 ~ 240V
Graphic display	Graphics card	P2000 5G	Machine appearance	Size	Depth x width x height: 553.7 mm x 430mm x 90 mm
	Backend output	4* DP		Color	Black
	DP	4x 4096*2160@120Hz or 4x 5120*2880@60Hz		Shell material	Metal
Network	Network card chip	Intel I211AT and Intel I219-LM	External environment	Operating temperature	0℃ ~ 40℃
	Network Interface	2x RJ45		Storage temperature	-20℃ ~ 70℃
I/O	USB	4*USB 2.0/4*USB 3.0		Relative humidity	5%~95%(non-condensed state)
	Audio	1 x Line out, 1 x Mic in, 1 x Line in			
	COM	1 COM port, optional 3 RS232 and 2 RS232/RS485			
Extension ports	Mini PCIE	1* Mini PCIE can support Wi-Fi/BT module			
	SIM	1* SIM Card Slot			
Storage	SSD	mSATA 128GB			
	HDD	1TB SATA 3.5 inches			
Operating system	Windows	Windows 10 64bit			
Button	Switch button	1* POWER button			
	Power button	1* Main power button (rear window)			



contact us
sales@digibirdtech.com

